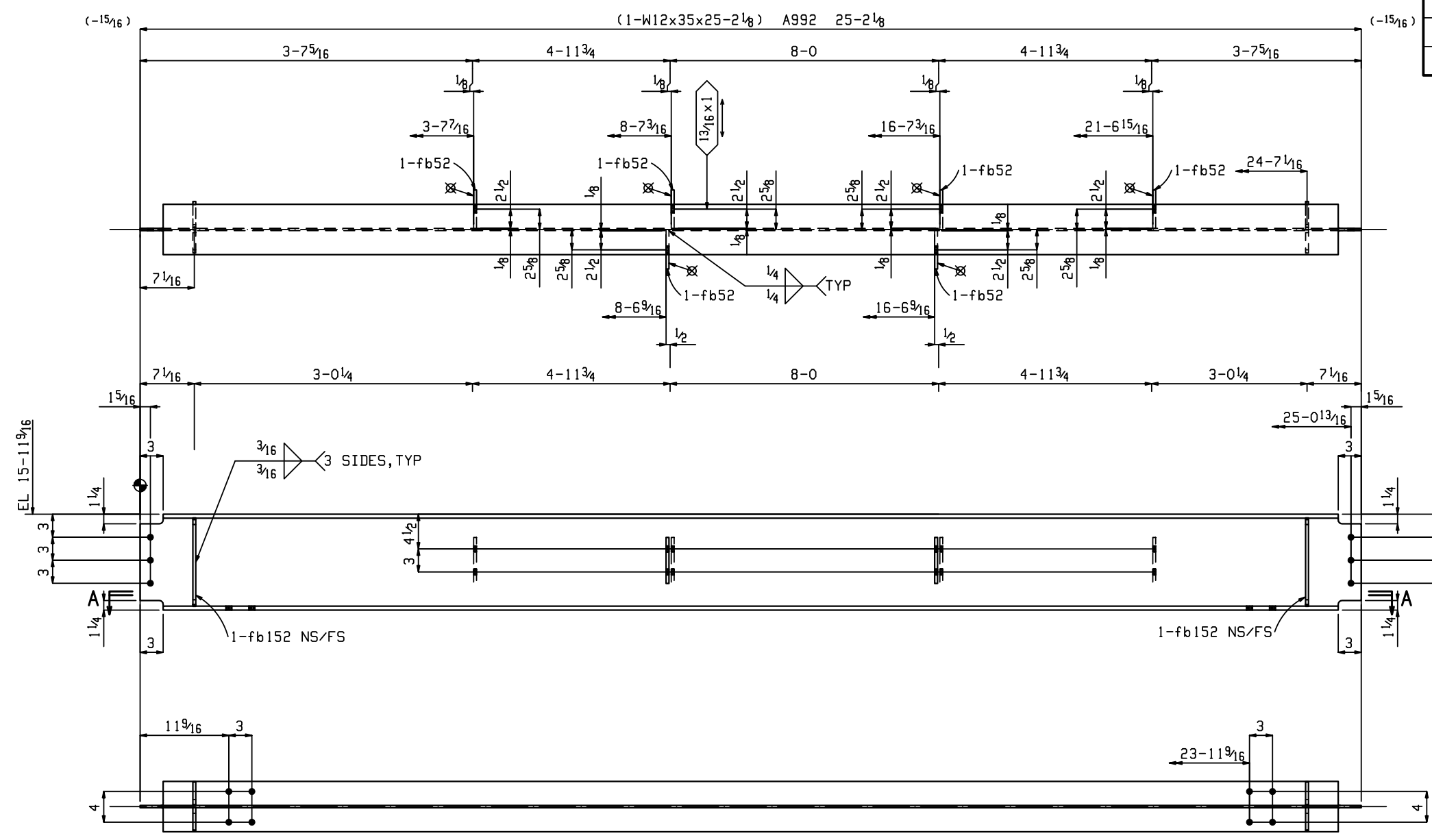


BILL OF MATERIAL

| QTY | ERECT. MK | NO. | SHAPE | LENGTH | ASSY MK | REMARKS | GRADE | Weight |
|-----|-----------|-----|----------|--------|---------|---------|-------|--------|
| | | | | | | | | Unit |
| 2 | 6B1 | 2 | BEAM | | | | | 900 |
| | | 2 | W12x35 | 25 | 2 1/8 | 6B1 | A992 | 867 |
| | | 12 | FL 3/8x5 | 0 | 6 | fb52 | A36 | 3 |
| | | 8 | FL 3/8x3 | 0 | 11 5/16 | fb152 | A36 | 4 |



Section A-A
6B1

2 BEAMS 6B1

| | |
|---|-----------------|
| W | 12 1/2 x 5 1/16 |
| F | 6 9/16 x 1/2 |
| K | 1 3/16 x 1 3/16 |

| | | | |
|-----------------------------|---|------------------------------------|-------------------------|
| REFERENCE DRWG./LOCATION | | | |
| MATERIAL (UNLESS NOTED) | 0 | 2-5-20 | RELEASE FOR FABRICATION |
| A36 | A | 8-14-19 | ISSUE FOR APPROVAL |
| SURFACE PREPARATION | REV. | DATE | DESCRIPTION |
| SP2 | | | |
| SHOP PAINT | SPECIALTY FABRICATION & WELDING, INC. 680 Goodbar Ave. Umatilla, FL 32784 Office: 352-669-9353 Fax: 352-669-9354 | | |
| 1 S/C STD SHOP PRIMER | | | |
| SHOP CONNECTIONS/ELECTRODES | JOB: ATLANTIC SELF STORAGE - (FLAGLER PARCEL 8) | | |
| E70XX_LH (3/16 FILLET UNO) | LOCATION: JACKSONVILLE, FL | | |
| FIELD CONNECTIONS | DETAILER | PALMETTO STRUCTURAL DETAILING, LLC | JOB # |
| 3/4" A325 | CHECKER | MILLER | DATE |
| HOLES (U.N.) | PROJECT MANAGER | MICHAEL PURVIS | 19-56 |
| 1 3/16" | | | DRWG. # |
| | | | 6B1 |