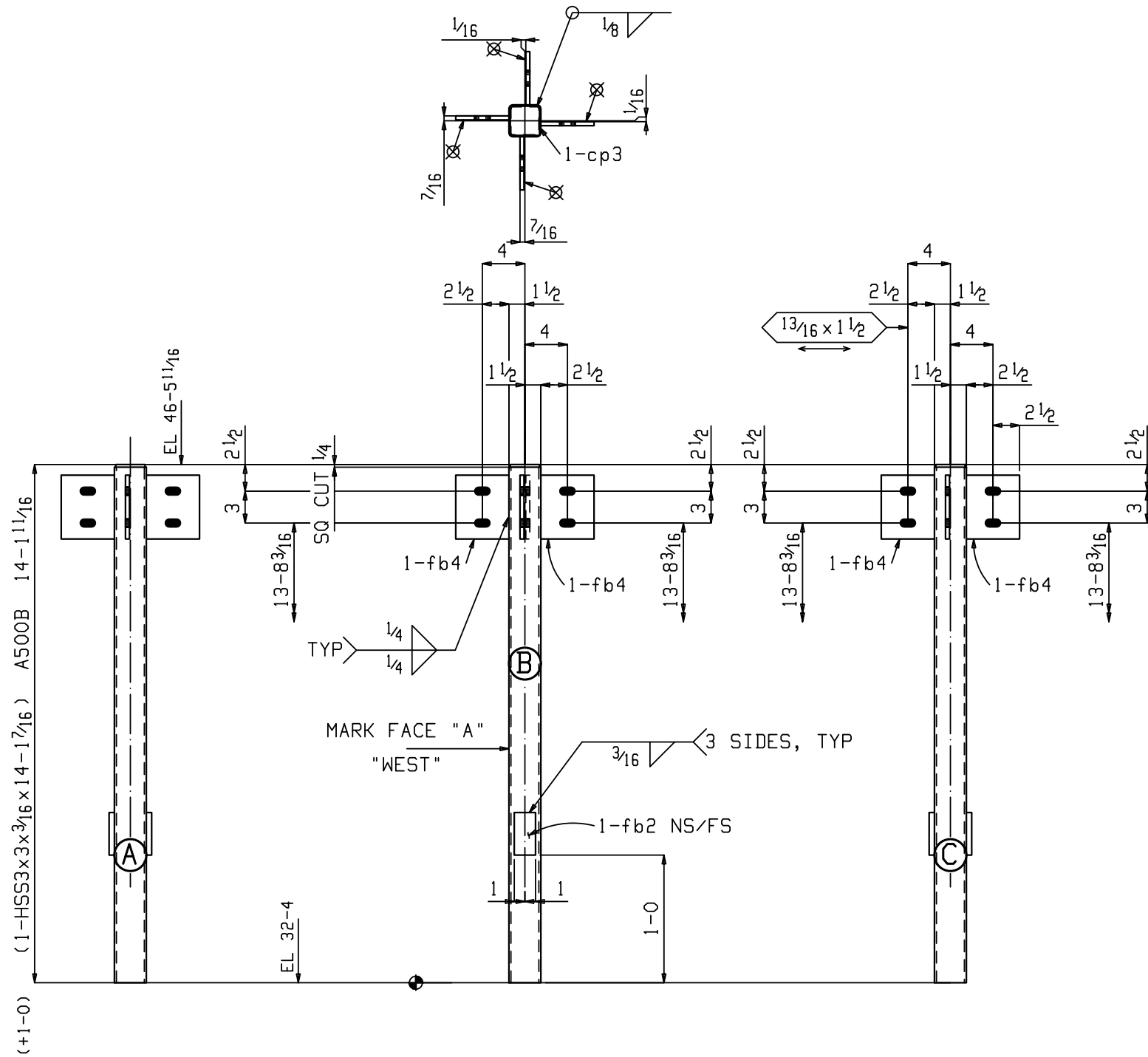


# BILL OF MATERIAL

QTY	ERECT. MK	NO.	SHAPE	LENGTH	ASSY MK	REMARKS	GRADE	Weight
								Unit
4	4C1	4	COLUMN					112
		4	HSS3x3x3/16	14	1 7/16	4C1	SIE	A500B
		8	FL 1/2x4	0	2	fb2		A36
		16	FL 3/8x5	0	6	fb4		A36
		4	PL 1/4x2 3/4	0	2 3/4	cp3		A36



**4 COLUMNS 4C1**

REFERENCE DRWG./LOCATION			
MATERIAL (UNLESS NOTED)	0	1-23-20	RELEASE FOR FABRICATION
A36	A	10-31-19	ISSUE FOR APPROVAL
SURFACE PREPARATION	REV.	DATE	DESCRIPTION
NONE			
SHOP PAINT	<b>SPECIALTY FABRICATION &amp; WELDING, INC.</b> 680 Goodbar Ave. Office: 352-669-9353 Umatilla, FL 32784 Fax: 352-669-9354		
NONE			
SHOP CONNECTIONS/ELECTRODES	JOB: ATLANTIC SELF STORAGE - (FLAGLER PARCEL 8)		
E70XX_LH (3/16 FILLET UNO)	LOCATION: JACKSONVILLE, FL		
FIELD CONNECTIONS	DETAILER	PALMETTO STRUCTURAL DETAILING, LLC	JOB #
3/4" A325	CHECKER	MILLER	DATE
			19-56
			DRWG. #
			4C1
			PROJECT MANAGER MICHAEL PURVIS